



JOSHI HOSPITAL MULTI SUPER SPECIALITY & TRAUMA CENTER

Kidney Transplant vs. Dialysis

Dr. Mukesh Joshi & Dr. Varun Joshi (Ortho)

Dr. Harneet Riyait (Nephro)

Dr. Gaurav & Dr. Sameer (Cardio)

Dr. Ankush Bansal (Gastroenterology)

Dr. Priya Joshi (Neurology)

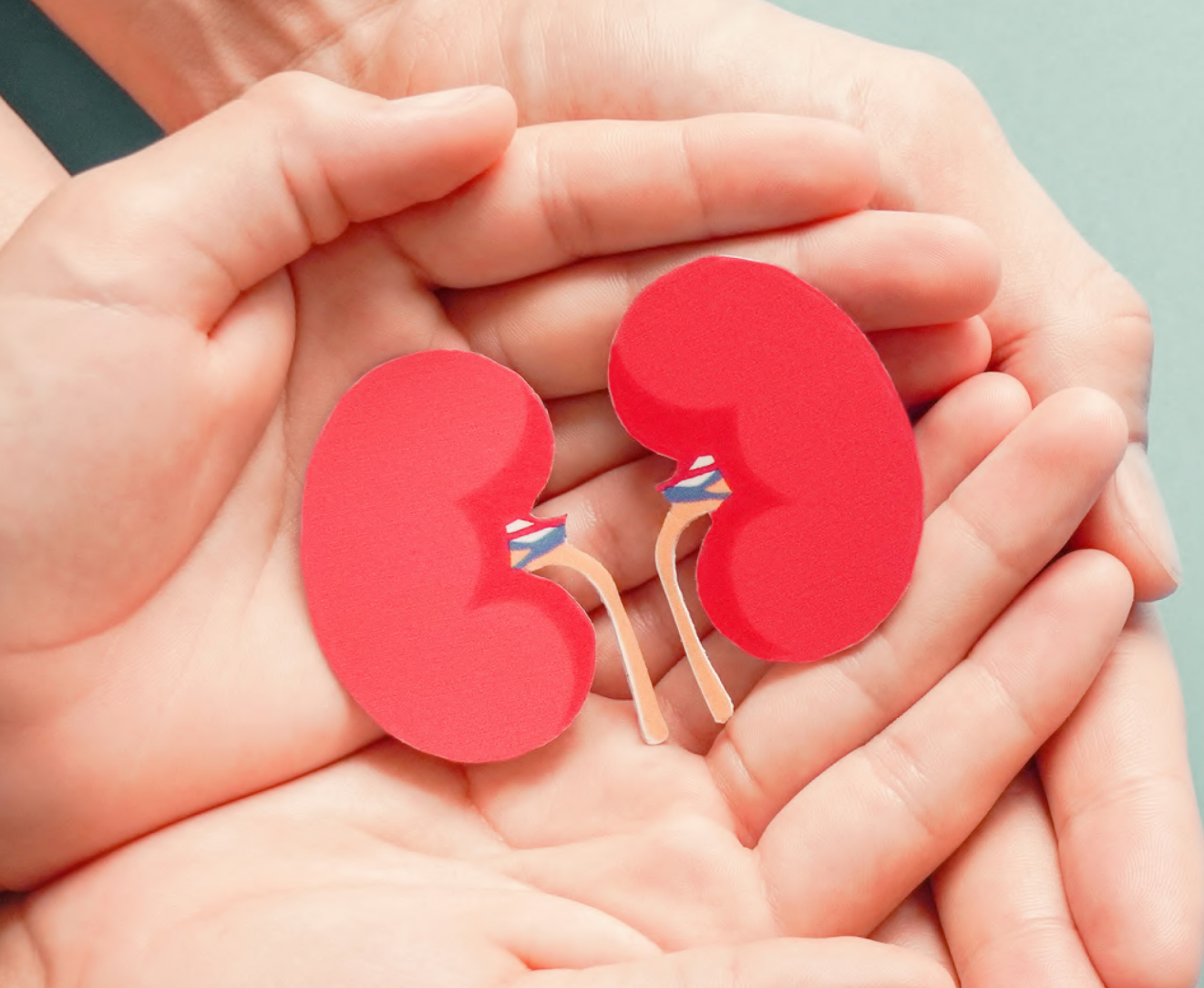


Kapurthala Chowk, Jalandhar



www.joshihospital.co.in

Call: +91-181-2621333 | +91-94170-07288



KIDNEY TRANSPLANT VS. DIALYSIS

WHAT IS KIDNEY FAILURE?

When kidneys are no longer functioning optimally, waste products like potassium, phosphorus and acids start accumulating in the blood.

10-15%

of adults have Chronic kidney disease.
(1,2,3,4)

9/10

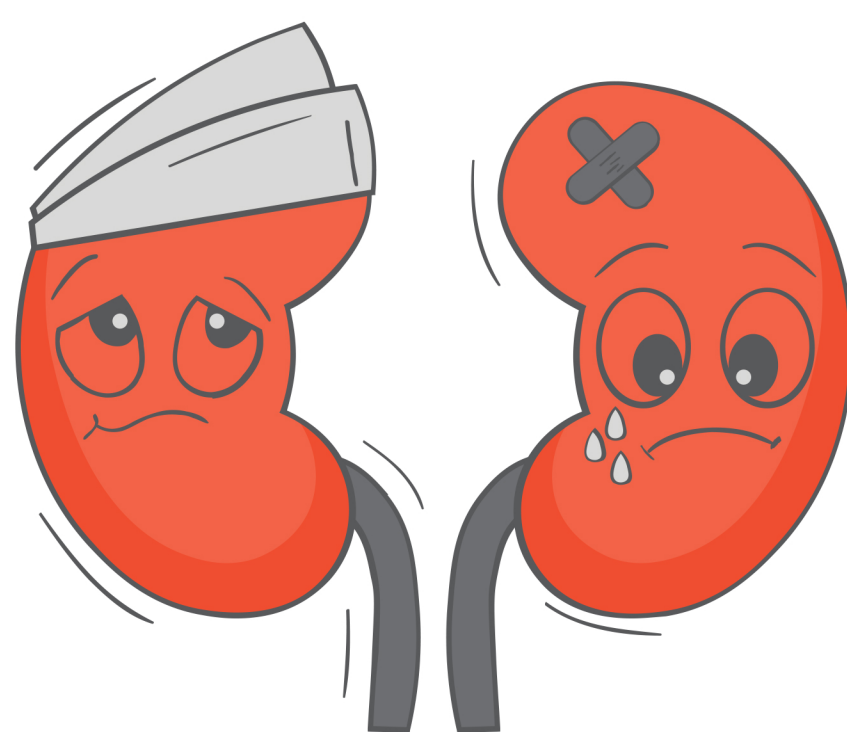
adults with CKD are unaware they have the condition.
(4)

1/3

1 in 3 people with diabetes have kidney disease.
(4,5)

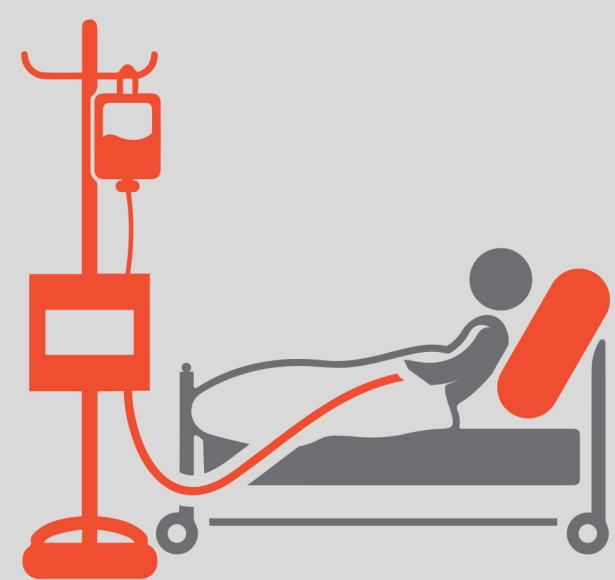
1/5

people with high blood pressure have kidney disease.
(4,5)



- Slightly more common in women (14%) than men (12%)
(7)
- 38% of CKD is among people aged 65 or older
(4)

ABOUT DIALYSIS



Hemodialysis

A machine regularly cleans up your blood. Requires hospital visit 3 times a week.

Peritoneal dialysis

A bag with a dialysis solution is installed on the abdominal lining to exchange waste material. Can be done at home.

160.8
/1000

Adjusted mortality rate for patients receiving dialysis.
(5)

15-20%

Adjusted mortality rate reduction with dialysis.
(5)

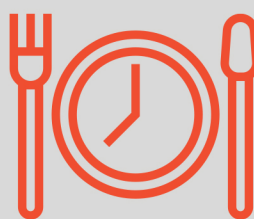
ABOUT RENAL TRANSPLANT

Treatment of choice for end-stage renal disease. A kidney can be transplanted from a relative, a family donor, or a brain-dead patient. Only one kidney is required to survive.

BENEFITS OF TRANSPLANT VS. DIALYSIS



Increased life expectancy



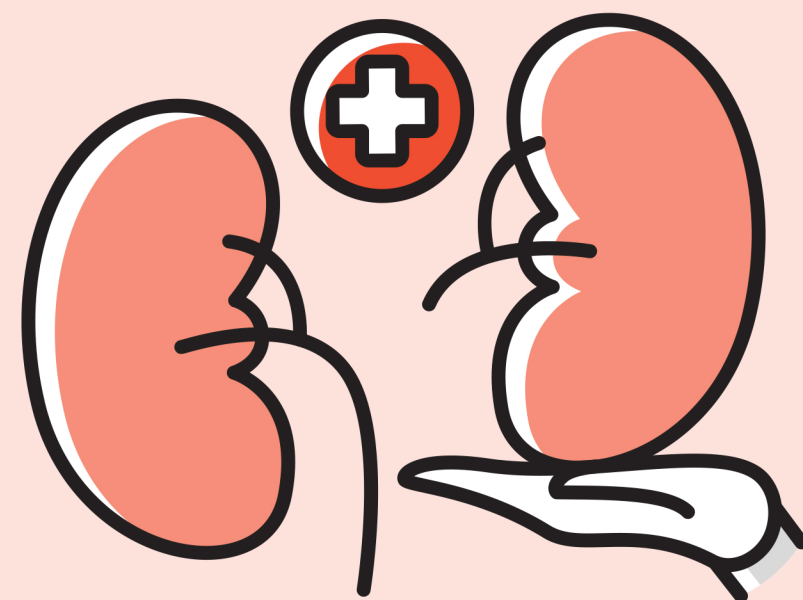
Fewer dietary restrictions



Better quality of life



Low risk of complications



48.9
/1000

Adjusted mortality rate is significantly lower for patients receiving transplants.
(5)



Patients with advanced age, severe heart disease and alcohol/drug abuse problems or recent history of cancers may not be eligible for transplantation.

>95%

Success rate of renal transplants in India in good facilities.
(6)



Lifelong medication is needed to suppress the immune system in transplant.

SERVICES

- Orthopaedics
- Cardiology
- Cardiac Surgery
- Nephrology
- Neurology
- Gastroenterology
- Gastric Surgery
- Plastic Surgery
- Skin & Cosmetology
- General Surgery
- General Medicine & Diabetic Care
- Dental
- Radiology
- MRI, CT & Ultrasound Scan
- ਹੱਡੀਆਂ ਅਤੇ ਜੋੜਾਂ ਦੇ ਰੋਗਾਂ ਦਾ ਇਲਾਜ
- ਦਿਲ ਦੇ ਰੋਗਾਂ ਦਾ ਇਲਾਜ
- ਕਾਰਡੀਐਕ ਸਰਜਰੀ
- ਨੈਫਰੋਲੋਜੀ
- ਨਿਊਰੋਲੋਜੀ
- ਪੇਟ ਦੀਆਂ ਬਿਮਾਰੀਆਂ ਦਾ ਇਲਾਜ
- ਗੈਸਟ੍ਰਿਕ ਸਰਜਰੀ
- ਪਲਾਸਟਿਕ ਸਰਜਰੀ
- ਚਮੜੀ ਦੇ ਰੋਗਾਂ ਦਾ ਇਲਾਜ
- ਜਨਰਲ ਸਰਜਰੀ
- ਜਨਰਲ ਮੈਡੀਸਨ ਅਤੇ ਸ਼ੂਗਰ ਦੀ ਦੇਖਭਾਲ
- ਦੇਵਾਂ ਦੇ ਰੋਗਾਂ ਦਾ ਇਲਾਜ
- ਰੇਡੀਓਲੋਜੀ
- ਐਮ.ਆਰ.ਆਈ, ਸੀ.ਟੀ. ਅਤੇ ਅਲਟ੍ਰਾਸਾਊਂਡ ਸਕੈਨ

FACILITIES

- 24x 7 Emergency
- Accident Trauma ICU
- Pain Management ICU
- Critical Care ICU
- Cardiac Care ICCU
- Stroke, Epilepsy ICU
- Parkinson- Alzheimer's Clinic
- Neuro & Spine Surgery
- Kidney Care & Dialysis
- Angiography, Angioplasty
- Endoscopy & Liver Care
- Arthroscopy & Rehabilitation
- Cancer Care & Surgery
- Plastic Surgery & Reimplantation
- Oncosurgery
- Physiotherapy
- Laboratory | Blood Bank

EMPANELMENTS

- ECHS
- CGHS
- CAPF
- PAP (POLICE SATKAR)
- RCF
- NHPC
- FCI
- HDFC ERGO
- Bajaj Allianz
- Ericson
- FHPL
- Go Digit
- Genins India Insurance
- Good Health
- Health India
- ICICI Prudential
- MD India
- Med Save
- Medi Assist
- Paramount
- Reliance General Insurance
- Aditya Birla Health Insurance
- Heritage Insurance
- ICICI Lombard
- Park Mediclaim
- Raksha
- Niva Bupa/Max Bupa
- Safeway TPA
- SBI General Insurance
- Star Health
- Tata AIG
- Universal Sampo
- Vidal Insurance
- Vipul Insurance

GET IN TOUCH

☎ (M) 88470-28606

☎ (M) 94170-07288

📍 Joshi hospital & trauma centre

📍 DR VARUN JOSHI

📍 joshihospitaltrauma

📍 drvarunortho

📍 DR VARUN JOSHI

🌐 www.joshihospital.co.in

📧 joshi.hospitaljal@gmail.com

📧 joshihospital1991@gmail.com

📧 joshi_hospital@yahoo.co.in

📍 Kapurthala Chowk, Jalandhar

ACCIDENTAL EMERGENCY 24 HRS.